



# FARM AUCTION

## ONLINE & PHONE BIDDING JANUARY 20, 2026



**67 +/- ACRES  
FOUNTAIN COUNTY  
THREE (3) TRACTS**

**39+/- FSA CROPLAND ACRES  
RECREATIONAL OPPORTUNITIES  
OPEN LEASE FOR 2026**



**[auctions.gfarmland.com](https://auctions.gfarmland.com)**

AUCTIONEER: JOHNNY KLEMME | IN #12000053  
SELLERS: THE MOORE FAMILY, et al.

DISCLAIMER: Image shown on cover page is for illustration use only.



# FOUNTAIN COUNTY

**67 +/- TOTAL ACRES**

TILLABLE & WOODED LAND  
FOUNTAIN COUNTY, IN



## KINGMAN, INDIANA

67 +/- Acres | Available in Three (3) Tracts

Bid on Individual Tracts or Whole Farm

**[auctions.gfarmland.com](https://auctions.gfarmland.com)**

**TUESDAY, JANUARY 20, 2026**

**BIDDING CLOSES 3:00PM EST**



AUCTIONEER: JOHNNY KLEMME | LICENSE # AU12000053

SELLERS: THE MOORE FAMILY, et al.



**FARM & LAND**  
Real Estate & Auctions

# AUCTION INFORMATION

67 +/- Acres | Fountain County, Indiana  
Listing # JK252365AU

## BIDDING CLOSES

Tuesday January 20, 2026 @ 3:00pm EST

[auctions.gfarmland.com](https://auctions.gfarmland.com)

PHONE BIDDING AVAILABLE



## AGENCY & AUCTIONEER

- Geswein Farm & Land Realty, LLC (and representatives) and Auctioneer John R Klemme are Agents of the seller. Auctioneer: John R. Klemme - License # AU12000053
- Sellers: The Moore Family, et al.

## ONLINE BIDDING

- To bid on these properties, you must be registered as an online bidder by 12:00PM EST on Tuesday, January 20, 2026. To register, visit [auctions.gfarmland.com](https://auctions.gfarmland.com) and follow on-screen prompts/buttons.
- Auction staff will contact you to verify information, receive driver's license number, and approve registration. **You will not be able to bid within an auction prior to speaking with auction staff.**
- If you register outside of business hours (8a-5p EST - Monday through Friday) you will receive a call at the next availability within business hours.
- Contact Auction Staff at (765) 426-6666 with questions. Staff members available 8a-5p EST Monday - Friday.

## PHONE BIDDING

- Bidders will be required to fill out the Phone Bidder Registration Form (on following page) or register at [auctions.gfarmland.com](https://auctions.gfarmland.com).
- Your registration must be received (via mail, fax, or online) by 5pm EST Monday, January 19, 2026.
- Questions or assistance needed? Call 765-426-6666

## VIEWING AUCTION (NOT BIDDING)

- To view only on sale day, navigate to the [auctions.gfarmland.com](https://auctions.gfarmland.com) (as above). Click on the "Enter Auction" button. The auction is LIVE when the button is green.

## FOR MORE INFORMATION...

Please review the Term & Conditions on page 5 of this information packet. Questions related to the property? Call Johnny Klemme at (765) 427-1619. Need help registering or have questions related to the auction process? Call the Auction staff at (765) 426-6666. Staff members available 8a-5p EST Monday - Friday.



# DATES TO REMEMBER

67 +/- Acres | Fountain County, Indiana

Listing # JK252365AU

[auctions.gfarmland.com](http://auctions.gfarmland.com)

# JANUARY 2026

SUN	MON	TUE	WED	THU	FRI	SAT
28	29	30	31	1	2	3
4	5	6	7	8	9	10
11	12	13	14	15	16	17
18	19	20	21	22	23	24
	PHONE BIDDER REGISTRATIONS DUE	BIDDING CLOSES	WIRE TRANSFER OF EARNEST MONEY DUE 5PM PURCHASE AGREEMENT EXECUTED BY 5PM EST			
25	26	27	28	29	30	31

- Phone bidder registrations must be received (via mail, fax, or online) by 5pm EST Monday, January 19, 2026.
- Online Bidders must be registered by 12:00PM EST on Tuesday, January 20, 2026. Bidding closes at 3:00PM EST on Tuesday, January 20, 2026.
- Successful Bidders must execute the Purchase Agreement/Sale Contract by 5pm EST Wednesday, December 3, 2025. Wire transfer of earnest money must be initiated and proof of transfer sent to Geswein Farm & Land Realty.

## AGENCY & AUCTIONEER

- Geswein Farm & Land Realty, LLC (and representatives) and Auctioneer John R Klemme are Agents of the seller.
- Auctioneer: John R. Klemme - License # AU12000053
- Seller: The Moore Family, et al.



# PHONE BIDDER REGISTRATION FORM

## TIPPECANOE COUNTY, INDIANA | LISTING #JK252365AU REAL ESTATE AUCTION

<p>Upon completing this form in its entirety, you may submit via:</p> <p>mail: Geswein Farm &amp; Land Realty Attn: Auctions 1100 N 9th St. Lafayette, IN 42304</p> <p>email: <a href="mailto:auctions@gfarmland.com">auctions@gfarmland.com</a></p> <p>fax: 765-497-2438</p>	<p><b><u>BIDDING CLOSES</u></b></p> <p>Tuesday, January 20, 2026 3:00pm EST</p> <p>ONLINE: <a href="http://auctions.gfarmland.com">auctions.gfarmland.com</a> Johnny Klemme, Auctioneer License #AU12000053 Sellers: The Moore Family, et al.</p>
---	---

The successful Bidder(s) must be prepared to complete a wire transfer for not less than 10% of the purchase price at the conclusion of the auction to serve as Earnest Money. Funds (wire transfers) must be made payable to Allied Capital Title and the transfer funds must be initiated by 5:00pm Eastern January 21, 2026. The property is being offered to the highest bidder(s) in the manner resulting in the highest sale price. Seller reserves the right to accept or reject any and/or all bids.

**QUESTIONS: Call 765-426-6666 or Email [auctions@gfarmland.com](mailto:auctions@gfarmland.com)**

---

FIRST NAME	LAST NAME
STREET ADDRESS	CITY/STATE/ZIP
PRIMARY PHONE	OTHER PHONE
EMAIL ADDRESS	
DRIVER LICENSE # (or other state issued ID)	ISSUING STATE
FINANCIAL INSTITUTION (bank or credit union)	ADDRESS

By signing below, bidder acknowledges receipt and understanding of terms listed within the Terms & Conditions page for this auction.

---

SIGNATURE	DATE
-----------	------



# ONLINE REGISTRATION

TIPPECANOE COUNTY, INDIANA | LISTING #JK252365AU  
REAL ESTATE AUCTION

[auctions.gfarmland.com](https://auctions.gfarmland.com)

BIDDING CLOSES

Tuesday, January 20, 2026 @ 3:00pm EST

Scan the QR code below for a tutorial video on  
how to register as an online bidder.



Visit [auctions.gfarmland.com](https://auctions.gfarmland.com) to register.

Need assistance? Call 765-426-6666 or email [auctions@gfarmland.com](mailto:auctions@gfarmland.com)

Johnny Klemme, Auctioneer  
License # AU12000053  
Sellers: The Moore Family, et al.

# AUCTION TERMS & CONDITIONS

## 67 +/- Acres | Fountain County, Indiana | Listing # JK252365AU



**BIDDER RESPONSIBILITY:** It is the Bidder/Buyers responsibility to read and review all terms & conditions in the bidder packet prior to bidding on any property. By bidding on the property, the Bidder/Buyer agrees that these terms will supersede all prior discussions, negotiations, and agreements, whether oral or written. The bidder/buyer agrees his/her actions shall be binding and obligatory upon the undersigned, their separate heirs, administrators, executors, assigns, and successors in the interest of the undersigned. Bidder may not assign the rights afforded the Bidder to any other party without the Seller's consent. Successful bidder(s) agree to immediately execute a purchase agreement following the conclusion of the auction per the following terms and conditions. By bidding on the property, bidder/buyer agrees to all terms and conditions set forth and will enter into a contractual real estate purchase agreement to purchase the property under the following terms and conditions. Each bid shall constitute an offer to purchase and the final bid, if accepted by the Sellers, shall constitute a binding contract between the Buyer(s) and the Sellers. The auctioneer will settle any disputes as to bids and his decision will be final. **To place a confidential phone, mail or wire bid, please contact Johnny Klemme at 765-427-1619 at least two days prior to the sale.**

**UPON CONCLUSION OF THE AUCTION:** The Winning Bidder(s) will enter into a Real Estate Contract immediately following conclusion of auction for presentation to the Seller. The Sellers reserve the right to accept or reject any and all bids. If the Winning Bidder(s) are not physically present (bidding by phone or online), the Winning Bidder(s) will be sent (electronically via DocuSign) a Real Estate Contract. Winning bidder(s) may print the Real Estate Contract and is/are required to fully and correctly complete and properly sign without any modifications. Bidder(s) are required to return the completed, signed contract to Geswein Farm & Land Realty, LLC by email by 5:00 PM EST of the day following the auction. Along with the completed, signed contract, the Winning Bidder(s) will be required to wire the specified non-refundable earnest money deposit as stated in the real estate terms within the Real Estate Contract. This non-refundable earnest money deposit will be held in escrow until closing and that amount will then be credited to the Buyer as part of the purchase price of the property. Wire transfer instructions and escrow agreement forms will be provided to the Buyer along with the contract after the auction. Purchaser shall be responsible for all wire transfer fees. Successful bidders not executing and returning the completed contract and earnest money deposit by 5:00 EST PM the day after the auction will be considered in default. Such default by the Successful Bidder will result in that Bidder's liability to both the Seller and Geswein Farm & Land Realty, LLC Seller shall have the right to (a) declare this contractual agreement cancelled and recover full damage for its breach, (b) to elect to affirm this contractual agreement and enforce its specific performance or (c) Seller can resell the property either publicly or privately with Geswein Farm & Land Realty, LLC and in such an event, the Buyer shall be liable for payment of any deficiency realized from the second sale plus all costs, including, but not limited to the holding costs of the property, the expenses of both sales, legal and incidental damages of both the Seller and Geswein Farm & Land Realty, LLC in addition, Geswein Farm & Land Realty, LLC also reserves the right to recover any damages separately from the breach of the Buyer. Both the Successful Bidder and Seller shall indemnify Geswein Farm & Land Realty, LLC for and hold harmless Geswein Farm & Land Realty, LLC from any costs, losses, liabilities, or expenses, including attorney fees resulting from Geswein Farm & Land Realty, LLC being named as a party to any legal action resulting from either Bidders or Sellers failure to fulfill any obligations and undertakings as set forth in this contractual agreement. **NO CONTINGENCIES: Bidding is not contingent on or subject to Buyer's financing, appraisal, survey or inspections of any kind or any other contingencies as agreed to by bidders at registration prior to bidding.**

**OFFERING PROCEDURE:** The successful Bidder(s) must be prepared to complete a wire transfer for not less than 10% of the purchase price at the conclusion of the auction to serve as Earnest Money. Funds (wire transfers) must be sent directly to Allied Capital Title. Wire transfer of Earnest Money to Allied Capital Title must be completed on January 21, 2026 by 5:00pm EST. Proof of wire transfer confirmation must be provided to Geswein Farm & Land Realty, LLC on January 21, 2026. Earnest Money Wire Instructions will be provided to the successful Bidder(s) post conclusion of the auction. Seller reserves the right to accept or reject any and/or all bids. The property is being offered to the highest bidder(s) in the manner resulting in the highest sale price.

**NEW DATA, CORRECTIONS AND CHANGES:** Please review all announcements prior to scheduled auction time to inspect any changes, corrections, or additions to the property information.

**DOWN PAYMENT:** A down payment for not less than ten (10%) percent of the bid will be required upon acceptance of the high bid(s) on January 20, 2026. This down payment shall serve as Earnest Money and the balance of the contract purchase price is due in cash at closing. See section above: 'OFFERING PROCEDURE' for more details on Earnest Money. **YOUR BIDDING IS NOT CONDITIONAL UPON FINANCING OR APPRAISAL,** be certain that you have arranged financing, if needed, and are capable of paying for the property in cash at closing.

**ACCEPTANCE OF BID PRICES:** The successful high bidder(s) will enter into a purchase agreement immediately following the close of bidding for presentation to the seller. Final bid prices are subject to approval or rejection by seller.

**POSSESSION & CLOSING:** Successful bidders are purchasing with no financing contingencies and must be prepared for cash settlement of their purchase on or before February 20, 2026. Closing to take place at Allied Capital Title in Covington, Indiana. Final settlement will require wire transfer.

**LEASE: OPEN LEASE FOR 2026.**

**TITLE:** Seller shall furnish the buyer at seller's expense an owner's policy of title insurance in the amount of the purchase price, and agrees to provide and execute a proper deed conveying merchantable title to the real estate to the buyer.

**REAL ESTATE TAXES AND ASSESSMENTS:** Seller will pay the 2025 payable in 2026 real estate taxes and assessments. 2026 real estate taxes and assessments due and payable in 2027 shall be pro-rated on the date of closing.

**EASEMENTS:** Sale of property is subject to any and all recorded or apparent easements.

**SURVEY:** A new survey will be completed for the farm, and the purchase price for the surveyed tract(s) will be adjusted, up or down, to the exact surveyed acres. The cost of the survey shall be shared equally by the seller and buyer(s). The type of survey performed shall be at the seller's option and sufficient for providing a standard form owner's title insurance policy and the transfer of merchantable title. The price per acre will be the auction price bid for the tract, divided by the tract acreage estimated in the auction brochure. Deckard Surveying has been contracted to complete the survey.

**MINERAL RIGHTS:** Sale shall include 100% of the mineral rights owned by the seller, if any.

**ACREAGES:** All acreages are approximate and have been estimated based upon current legal descriptions, FSA records, and aerial mapping software.

**AERIAL IMAGES:** Photos, aerial images, and map drawings are for illustration purposes only and not surveyed boundary lines unless specified.

**TECHNICAL ISSUES DISCLAIMER:** In the event there are technical difficulties related to the server, software, internet or any other online auction-related technologies, Geswein Farm & Land Realty, LLC reserves the right to extend bidding, continue the bidding, or close the bidding. Neither the company providing the software, nor Geswein Farm & Land Realty, LLC, shall be held responsible for a missed bid or the failure of the software to function properly for any reason.

**CONDITIONS OF THE AUCTION:** The Auctioneer's decision is final in the event of a dispute over any Auction matter. The Auctioneer reserves the right to accept bids in any increments he feels are in the best interest of his clients and reserve the right to waive any previously printed or announced requirements. All Auction day announcements by the Auctioneer supersede any printed material or any other Auction statements made previously. The Auctioneer reserves the right to bid on behalf of any buyer. All Auction Sales Contracts will be presented to the seller for approval. The Auctioneer reserves the right to withdraw any property from the Auction, without penalty. Auctioneer may elect to cancel the Auction without penalty if Auctioneer believes that the outcome will not be in the Seller's best interest. If Seller is not present, the Auctioneer may elect to start or cancel the Auction without penalty. The Auctioneer shall be held harmless by buyer and seller should the property fail to go to a successful settlement for any reason. The seller, Auctioneer, and its agents shall not be held liable for any errors or omissions regarding Auction property. Buyer assumes responsibility to check with the appropriate authority/authorities regarding the property's zoning and current or future intended use as well as any restrictions or covenants affecting the property. Bidder(s) have the right and should examine the applicable county master plan and any municipal land use plans and maps for the area in which the property is located prior to bidding. The Seller, Auctioneer, and agents assume no responsibility for the information contained in said plan(s) and assumes no liability for failure by buyer to review the plans. The contract will not be contingent upon bidder(s) review of such plans. Auctioneer complies with all federal, state, and local laws regarding the buying and selling of property.

**AUCTION END TIMES:** Geswein Farm & Land Realty, LLC online only auctions are timed events and all bidding will close at specified time. However, the auction software utilizes an 'Auto Extend' feature: any bid placed within the final 5 minutes of an auction will result in the auction automatically extending for an additional 5 minutes. The bidding will extend in 5-minute increments from the time the last bid is placed until there are no more bids and the lots sit idle for 5 minutes. Therefore, the auction will not close until all bidding parties are satisfied, and no one can be outbid at the last second without having another opportunity to bid again. Auctioneer reserves the right to modify the Auto Extend time allotment. If this time span is to be modified (decreased), an announcement will be made via the chat message system within the online bidding platform.

**CONDUCT OF THE AUCTION:** The minimum bid increase will be \$5,000. Geswein Farm & Land Realty, LLC and the Seller reserves the right to reject any and all bids for any reason and also reserves the right to cancel this auction or remove any item or lot from this auction prior to the close of bidding. Conduct at the auction and increments of bidding are at the direction and discretion of the auction company and/or auctioneer. The seller & sellers agent reserve the right to preclude any person from bidding if there are any questions as to the person's credentials, fitness, etc. All decisions of the auction company or seller agent are final.

**RELEASE OF LIABILITY:** Attendees agree to observe and obey all rules, warnings, and oral instructions or directions given by Geswein Farm & Land Realty, LLC and/or auction house. Attendees hereby release, waive, and forever discharge any and all liability, claims, and demands of whatever kind or nature against Geswein Farm & Land Realty, LLC and its affiliated partners and sponsors, including in each case, without limitation, their directors, officers, employees, volunteers, and agents (the "released parties") either in law or in equity, to the fullest extent permissible by law, including but not limited to damages or losses caused by the negligence, fault, or conduct of any kind on the part of the released parties, including but not limited to death, bodily injury, illness, economic loss, or out of pocket expenses, or loss or damage to property, which attendees, heirs, assignees, next of kin and/or legally appointed or designated representatives, may have or which may hereinafter accrue on my behalf, which arise or may hereafter arise from my attendance and/or participation.

**PROPERTY INSPECTION:** Every potential Bidder is responsible for conducting, at their own risk, their own independent inspections, due diligence, investigations, and inquires concerning the property. The information contained in the brochure is believed to be accurate but is subject to verification by all parties relying on it. No liability for its accuracy, errors or omissions is assumed by the seller, the auction company, auctioneer, or real estate agency. All sketches and dimensions in this brochure are approximate. All acreages are approximate and have been estimated based on legal descriptions or aerial photographs. Conduct at the auction and increments of bidding are at the direction and discretion of the auction company and/or auctioneer. The seller & sellers agent reserve the right to preclude any person from bidding if there are any questions as to the person's credentials, fitness, etc. All decisions of the auction company or seller agent are final. Bidder expressly warrants the purchase is being made AS IS CONDITION and solely based upon Bidder's examination of the Property and without any expressed or implied warranties of the Auction Company or Seller. The property is sold, and the Bidder agrees to accept the Property in its present condition, AS IS, with all faults, in all respects, subject to utility easements, zoning ordinances, and any other restrictions of record. No warranties as to physical condition, environmental condition, habitability, suitability to a particular purpose, tenancies, or compliance with any laws, codes, or ordinances, including those relating to water supplies and septic systems ("Deficiencies") are made by the Seller unless stated otherwise. Any and all cost and responsibility for curing Deficiencies, if any, is the Bidder's, and the correction and cure of any Deficiencies shall not be a condition of this sale or affect the Bidder's obligations under this Contract. Your bid on this auction indicates both an understanding and an acceptance of the terms of this contractual agreement between yourself and both the seller and Geswein Farm & Land Realty, LLC and that you, as the bidder, are prepared to purchase the property under the terms and conditions of this auction.

The information contained in the brochure is believed to be accurate but is subject to verification by all parties relying on it. No liability for its accuracy, errors or omissions is assumed by the seller, the auction company, auctioneer, or real estate agency. All sketches and dimensions in this brochure are approximate. All acreages are approximate and have been estimated based on legal descriptions or aerial photographs.

**PROPERTY CONDITION:** Bidder expressly warrants the purchase is being made in AS IS CONDITION and solely based upon Bidder's examination of the Property and without any expressed or implied warranties of the Auction Company or Seller. The property is sold, and the Bidder agrees to accept the Property in its present condition, AS IS, with all faults, in all respects, subject to utility easements, zoning ordinances, and any other restrictions of record. No warranties as to physical condition, environmental condition, habitability, suitability to a particular purpose, tenancies, or compliance with any laws, codes, or ordinances, including those relating to water supplies and septic systems ("Deficiencies") are made by the Seller unless stated otherwise. Any and all cost and responsibility for curing Deficiencies, if any, is the Bidder's, and the correction and cure of any Deficiencies shall not be a condition of this sale or affect the Bidder's obligations under this Contract.

**CONFLICTS:** In the event of any conflict between this document and the sales contract, the sales contract will prevail.

**AGENCY & AUCTIONEER:** Auctioneer John R. Klemme and Geswein Farm & Land Realty LLC (and its representatives) are exclusive agents of the seller.

Indiana Auction License # AU12000053.

SELLERS: The Moore Family, et al.

Geswein Farm & Land Realty  
1100 N 9th St, Lafayette IN  
auctions@gfarmland.com  
765-426-6666



**DISCLAIMER AND ABSENCE OF WARRANTIES:** All information in this brochure and all related materials are subject to the terms and conditions outlined in the purchase agreement. ANNOUNCEMENTS MADE BY THE REAL ESTATE AGENCY OR AUCTIONEER DURING THE TIME OF SALE WILL TAKE PRECEDENCE OVER ANY PREVIOUSLY PRINTED MATERIAL OR ANY ORAL STATEMENT MADE.

# FARM & LAND AUCTION



## 67.657 +/- ACRES New Richmond, Indiana

Fulton Township / Fountain County

- Offered as Three (3) Tracts
  - Bid on Individual Tracts or Whole Farm
- 39.02 FSA Crop Acres
- Whole Farm Surety WAPI 165.4
- Convenient Road Frontage on CR 500 W
- Excellent Investment Opportunity
- **\*New Survey Completed Jan 2026**

### AUCTIONEER:

JOHNNY KLEMME

(765) 427-1619

Johnny@gfarmland.com

IN AU# 12000053

SELLERS: The Moore Family, et al.

Photos, aerial images, and map drawings are for illustration purposes only and not surveyed boundary lines unless specified.



ONLINE

[auctions.gfarmland.com](https://auctions.gfarmland.com)



PHONE BIDDING AVAILABLE

Call 765-426-6666 for details



# TRACT 1

67 +/- Acres | Fountain County, Indiana

Listing #JK252365AU



## 18.42 +/- ACRES

### Fulton Township / Fountain County

- Productive Tillable Crop Acres
- 8.35 +/- FSA Crop Acres
- Surety WAPI 167.5
- Investigate Potential Homesites
- Mature Oaks & Hardwoods
- Recreational Opportunities
- OPEN LEASE FOR 2026

Photos, aerial images, and map drawings are for illustration purposes only and not surveyed boundary lines unless specified.



**FARM & LAND**  
Real Estate & Auctions



#### AUCTIONEER:

JOHNNY KLEMME  
(765) 427-1619

Johnny@gfarmland.com

IN AU# 12000053

SELLER: The Moore Family, et al.



# TRACT 2

67 +/- Acres | Fountain County, Indiana

Listing #JK252365AU



## 33.018 +/- ACRES

### Fulton Township / Fountain County

- Productive Tillable Crop Acres
- 30.67 +/- FSA Crop Acres
- Surety WAPI 164.9
- Highly Productive Soils
- Investigate Potential Homesites
- OPEN LEASE FOR 2026

Photos, aerial images, and map drawings are for illustration purposes only and not surveyed boundary lines unless specified.



**FARM & LAND**  
Real Estate & Auctions



#### AUCTIONEER:

JOHNNY KLEMME  
(765) 427-1619

Johnny@gfarmland.com

IN AU# 12000053

SELLER: The Moore Family, et al.



# TRACT 3

67 +/- Acres | Fountain County, Indiana

Listing #JK252365AU



## 16.219 +/- ACRES

### Fulton Township / Fountain County

- Investigate Potential Homesites
- Mature Oak, Hickory, and Hardwoods
- Recreational Opportunities
- OPEN LEASE FOR 2026



**FARM & LAND**  
Real Estate & Auctions



#### AUCTIONEER:

JOHNNY KLEMME  
(765) 427-1619

Johnny@gfarmland.com

IN AU# 12000053

SELLER: The Moore Family, et al.

Photos, aerial images, and map drawings are for illustration purposes only and not surveyed boundary lines unless specified.



# FSA TRACT MAP

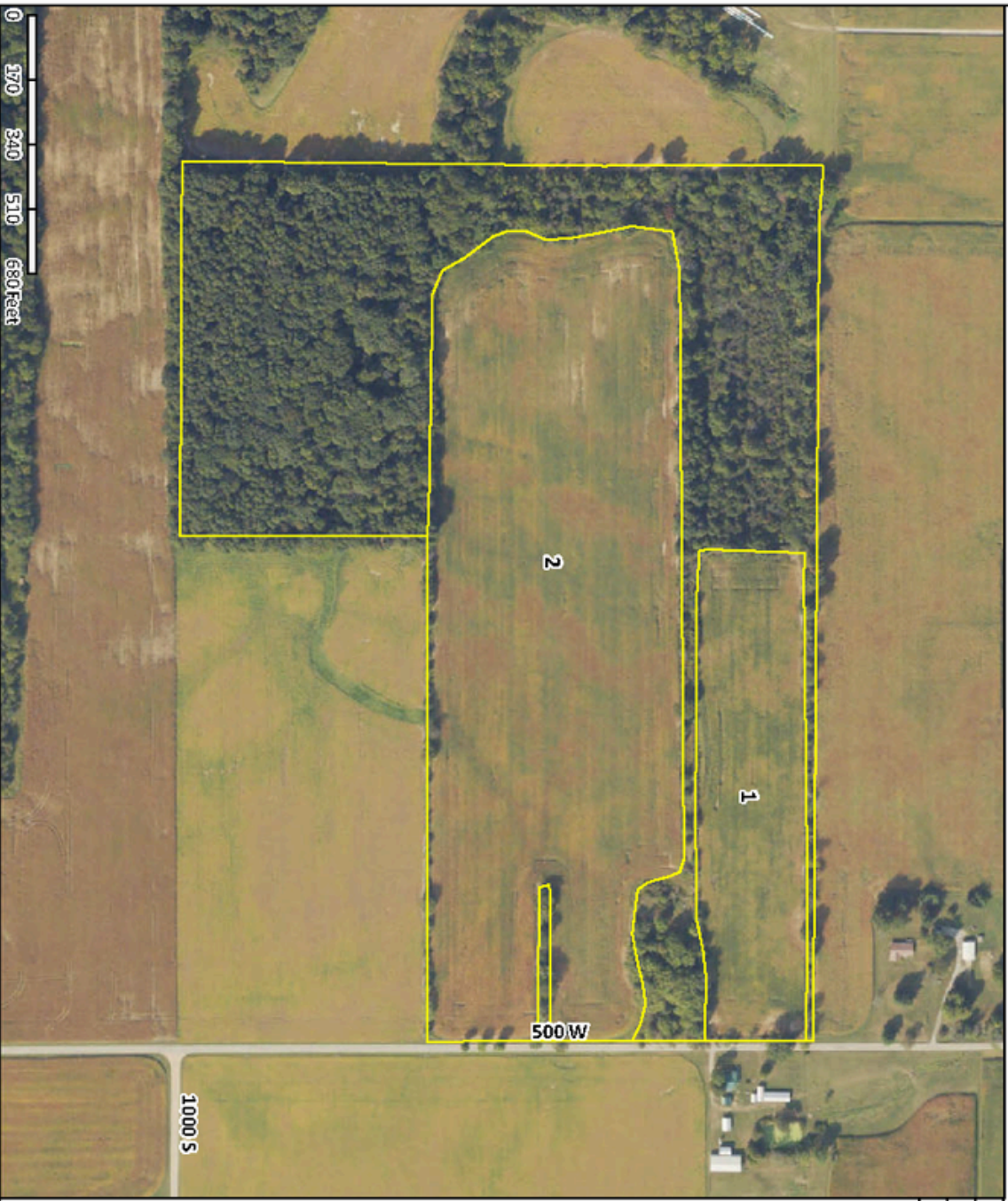
67 +/- Acres | Fountain County, Indiana  
 Listing #JK252365AU

**USDA Farm 102 Tract 305**  
 Administered by: Fountain County, Indiana

Source: Primarily USDA NADP 2024 imagery; IDHS or Dynamap roads; FSA data 2025-09-04 08:42:44

Map prepared on: 9/4/2025  
 68.4 Tract acres  
 39.02 Cropland acres  
 0 CRP acres

- Legend:
- CRP
  - Wetland Determination Identifiers:
  - Restricted Use
  - ▼ Limited Restrictions *Fountain*
  - Exempt from Conservation Compliance Provisions
  - CLU



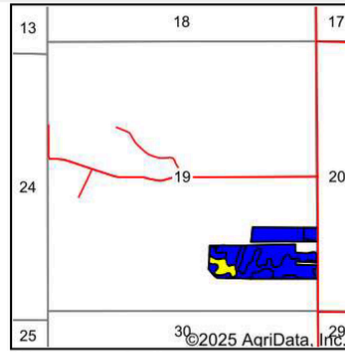
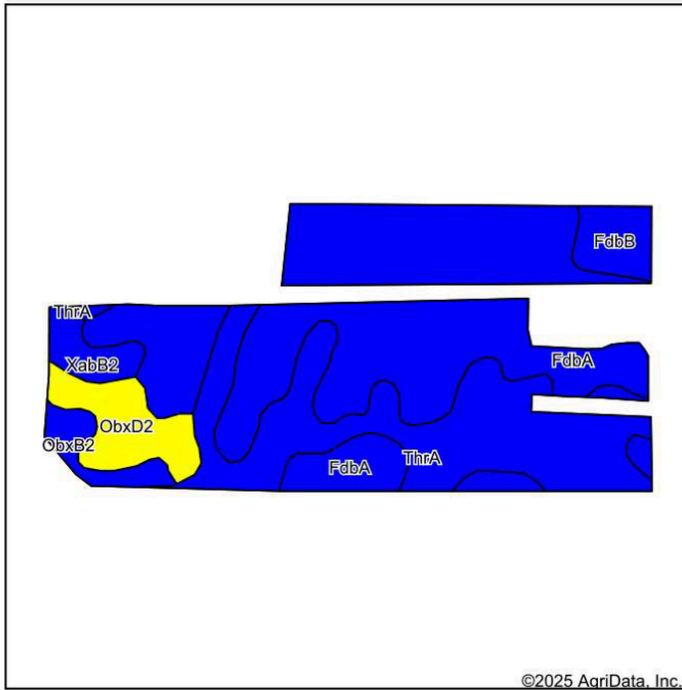
CLU	Acres	HEL	LC	Contract	Pac	Yr	Cl
1	8.35	N	2				Y
2	30.67	N	2				Y

Scale: 0 170 340 510 680 Feet

USDA FSA maps are for FSA program administration only. This map does not represent a legal survey or reflect actual ownership; rather it depicts information provided directly from the producer and/or NADP imagery. The producer accepts the data 'as is' and assumes all risks associated with its use. The USDA Farm Service Agency assumes no responsibility for actual or consequential damage incurred as a result of any user's reliance on this data outside FSA programs. Wetland identifiers do not represent the size, shape, or specific determination of the area. Refer to your original determination (CPA-026 and attached maps) for exact boundaries and determinations or contact NRCS.

# SOILS MAP: WHOLE FARM

67 +/- Acres | Fountain County, Indiana  
Listing #JK252365AU



State: **Indiana**  
County: **Fountain**  
Location: **19-18N-8W**  
Township: **Fulton**  
Acres: **38.73**  
Date: **10/23/2025**

**GESWEIN**  
FARM & LAND

Maps Provided By:  
**surety**  
CUSTOMIZED ONLINE MAPPING  
© AgriData, Inc. 2023 www.AgriDataInc.com



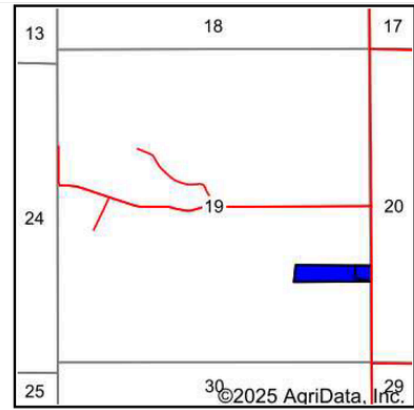
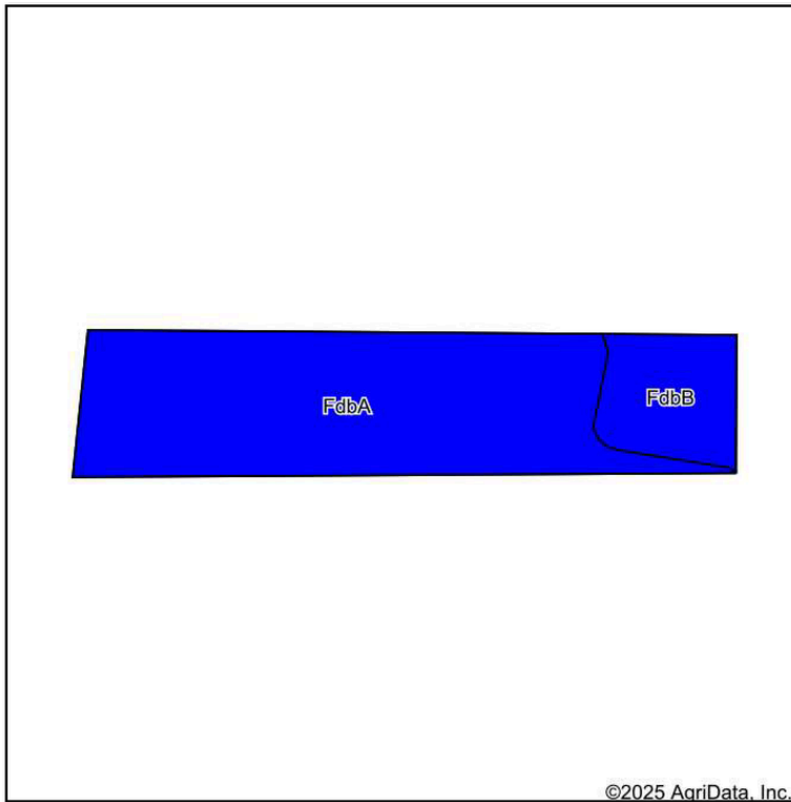
Soils data provided by USDA and NRCS.

Area Symbol: IN045, Soil Area Version: 26																		
Code	Soil Description	Acres	Percent of field	Non-Irr Class Legend	Water Table	Non-Irr Class *c	Corn Bu	Grass legume hay Tons	Orchardgrass alfalfa hay Tons	Orchardgrass red clover hay Tons	Pasture AUM	Soybeans Bu	Tall fescue AUM	Winter wheat Bu	*n NCCPI Overall	*n NCCPI Corn	*n NCCPI Soybeans	
FdbA	Fincastle silt loam, Tipton Till Plain, 0 to 2 percent slopes	21.41	55.3%	■	2.5ft.	Ilw	168	5			11	62		65	90	90	80	
ThrA	Treaty silty clay loam, 0 to 1 percent slopes	10.75	27.8%	■	2.5ft.	Ilw	181	6			12	64		61	82	81	76	
ObxD2	Ockley silt loam, 12 to 18 percent slopes, eroded	2.71	7.0%	■	> 6.5ft.	Ive	104	4			7	37		51	72	72	55	
FdbB	Fincastle silt loam, Tipton Till Plain, 2 to 4 percent slopes	1.51	3.9%	■	2.5ft.	Ile	165	5			11	58		74	91	91	80	
ObxB2	Ockley silt loam, 2 to 6 percent slopes, eroded	1.18	3.0%	■	> 6.5ft.	Ile	132	4			9	46		65	82	82	63	
XabB2	Xenia silt loam, 2 to 6 percent slopes, eroded	1.17	3.0%	■	2.7ft.	Ile	152	5	1	1	10	53	1	68	86	86	71	
<b>Weighted Average</b>							<b>2.14</b>	<b>165.4</b>	<b>5.2</b>	<b>*-</b>	<b>*-</b>	<b>10.9</b>	<b>59.9</b>	<b>*-</b>	<b>63.4</b>	<b>*n 86.2</b>	<b>*n 85.9</b>	<b>*n 76.4</b>

\*n: The aggregation method is "Weighted Average using all components"  
\*c: Using Capabilities Class Dominant Condition Aggregation Method

# SOILS MAP: TRACT 1

67 +/- Acres | Fountain County, Indiana  
Listing #JK252365AU



State: **Indiana**  
County: **Fountain**  
Location: **19-18N-8W**  
Township: **Fulton**  
Acres: **8.43**  
Date: **10/23/2025**

**GESWEIN**  
**FARM & LAND**

Maps Provided By:



Soils data provided by USDA and NRCS.

©2025 AgriData, Inc.

© AgriData, Inc. 2023

www.AgriDataInc.com

Area Symbol: IN045, Soil Area Version: 26

Code	Soil Description	Acres	Percent of field	Non-Irr Class Legend	Water Table	Non-Irr Class *c	Corn Bu	Grass legume hay Tons	Pasture AUM	Soybeans Bu	Winter wheat Bu	*n NCCPI Overall	*n NCCPI Corn	*n NCCPI Soybeans
FdbA	Fincastle silt loam, Tipton Till Plain, 0 to 2 percent slopes	6.92	82.1%		2.5ft.	llw	168	5	11	62	65	90	90	80
FdbB	Fincastle silt loam, Tipton Till Plain, 2 to 4 percent slopes	1.51	17.9%		2.5ft.	lle	165	5	11	58	74	91	91	80
<b>Weighted Average</b>						<b>2.00</b>	<b>167.5</b>	<b>5</b>	<b>11</b>	<b>61.3</b>	<b>66.6</b>	<b>*n 90.2</b>	<b>*n 90.2</b>	<b>*n 80</b>

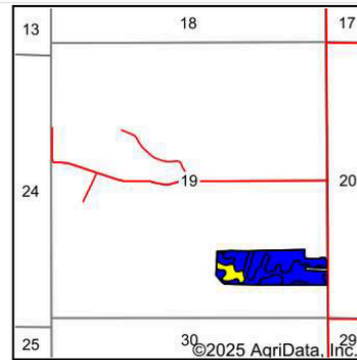
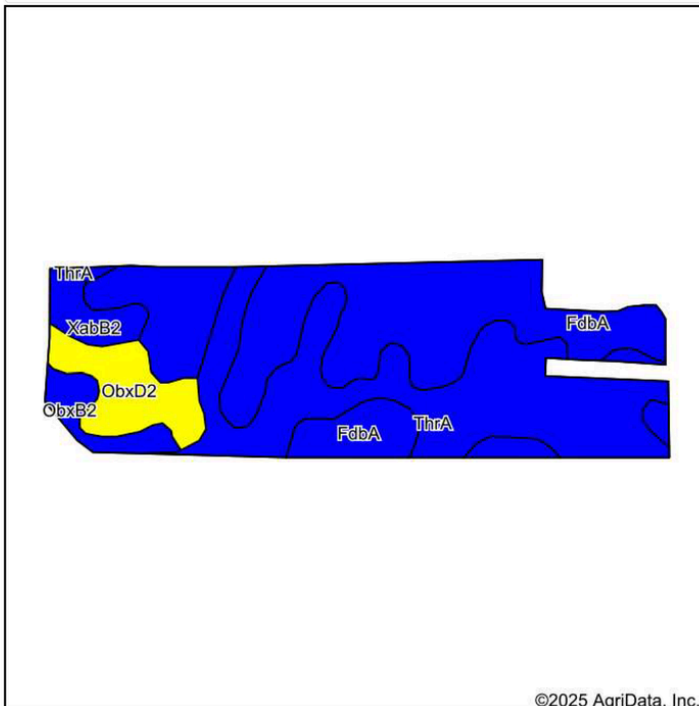
\*n: The aggregation method is "Weighted Average using all components"

\*c: Using Capabilities Class Dominant Condition Aggregation Method

Soils data provided by USDA and NRCS.

# SOILS MAP: TRACT 2

67 +/- Acres | Fountain County, Indiana  
Listing #JK252365AU



State: **Indiana**  
County: **Fountain**  
Location: **19-18N-8W**  
Township: **Fulton**  
Acres: **30.3**  
Date: **10/23/2025**

**GESWEIN**  
FARM & LAND

Maps Provided By:  
**surety**  
CUSTOMIZED ONLINE MAPPING  
© AgriData, Inc. 2023 www.AgriDataInc.com



Soils data provided by USDA and NRCS.

©2025 AgriData, Inc.

Area Symbol: IN045, Soil Area Version: 26																	
Code	Soil Description	Acres	Percent of field	Non-Irr Class Legend	Water Table	Non-Irr Class *c	Corn Bu	Grass legume hay Tons	Orchardgrass alfalfa hay Tons	Orchardgrass red clover hay Tons	Pasture AUM	Soybeans Bu	Tall fescue AUM	Winter wheat Bu	*n NCCPI Overall	*n NCCPI Corn	*n NCCPI Soybeans
FdbA	Fincastle silt loam, Tipton Till Plain, 0 to 2 percent slopes	14.49	47.8%	■	2.5ft.	llw	168	5			11	62		65	90	90	80
ThrA	Treaty silty clay loam, 0 to 1 percent slopes	10.75	35.5%	■	2.5ft.	llw	181	6			12	64		61	82	81	76
ObxD2	Ockley silt loam, 12 to 18 percent slopes, eroded	2.71	8.9%	■	> 6.5ft.	Ive	104	4			7	37		51	72	72	55
ObxB2	Ockley silt loam, 2 to 6 percent slopes, eroded	1.18	3.9%	■	> 6.5ft.	lle	132	4			9	46		65	82	82	63
XabB2	Xenia silt loam, 2 to 6 percent slopes, eroded	1.17	3.9%	■	2.7ft.	lle	152	5		1	10	53	1	68	86	86	71
<b>Weighted Average</b>						<b>2.18</b>	<b>164.9</b>	<b>5.2</b>	<b>*-</b>	<b>*-</b>	<b>10.9</b>	<b>59.5</b>	<b>*-</b>	<b>62.4</b>	<b>*n 85.1</b>	<b>*n 84.7</b>	<b>*n 75.3</b>

\*n: The aggregation method is "Weighted Average using all components"

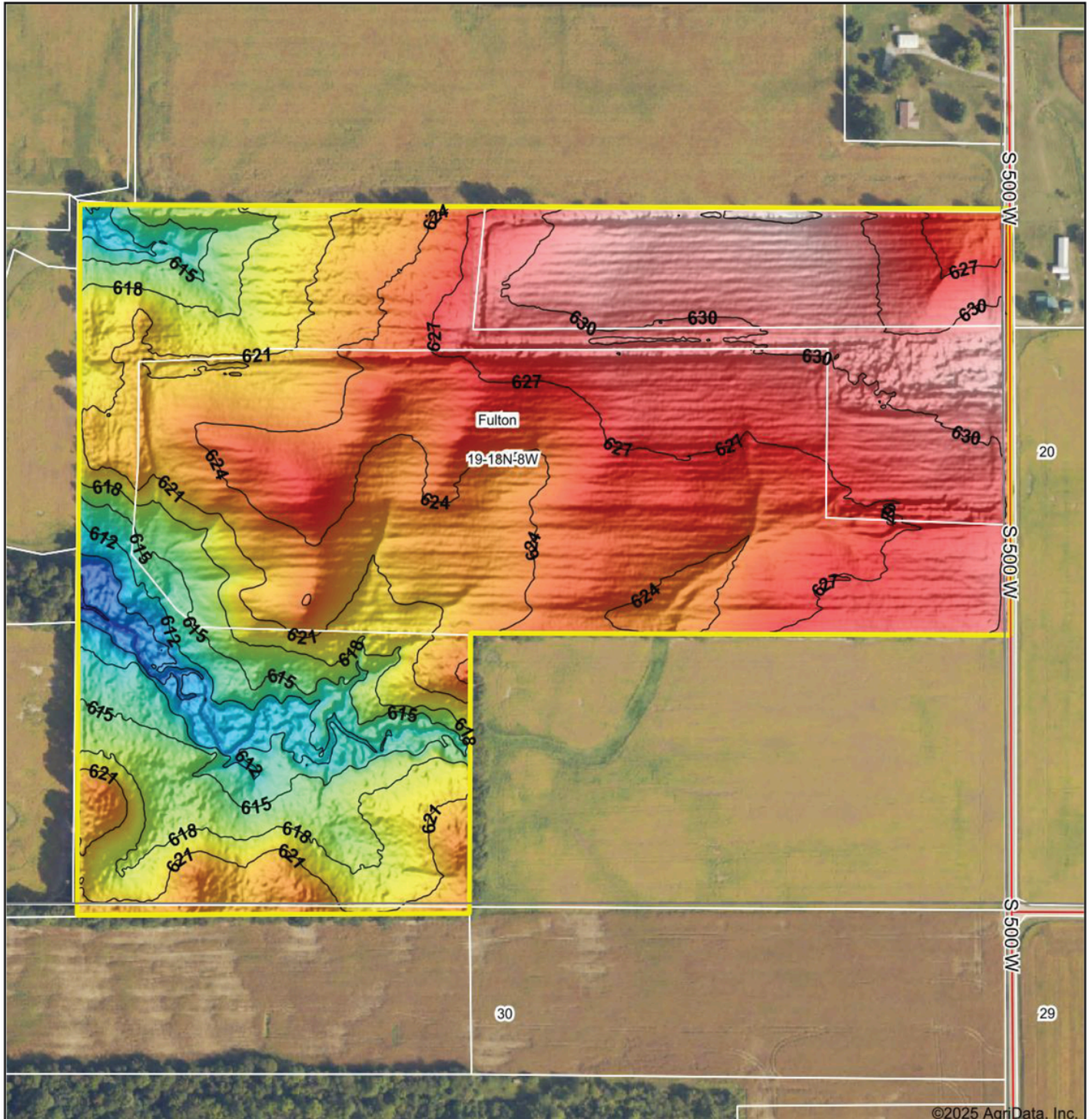
\*c: Using Capabilities Class Dominant Condition Aggregation Method

Soils data provided by USDA and NRCS.

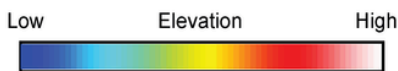
# TOPOGRAPHY

67 +/- Acres | Fountain County, Indiana

Listing #JK252365AU



©2025 AgriData, Inc.



**GESWEIN**  
FARM & LAND

Maps Provided By:  
**surety**  
CUSTOMIZED ONLINE MAPPING

© AgriData, Inc. 2023 www.AgriDataInc.com  
Field borders provided by Farm Service Agency as of 5/21/2008.

Source: USGS 1 meter dem  
Interval(ft): 3  
Min: 604.4  
Max: 634.3  
Range: 29.9  
Average: 623.3  
Standard Deviation: 5.64 ft



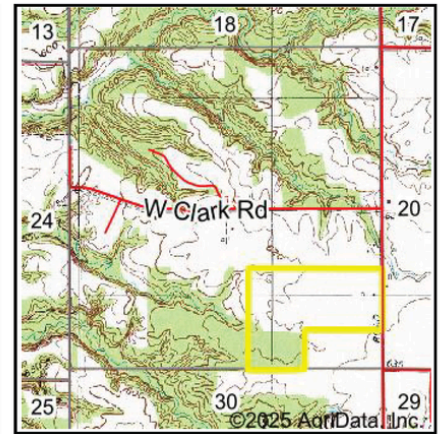
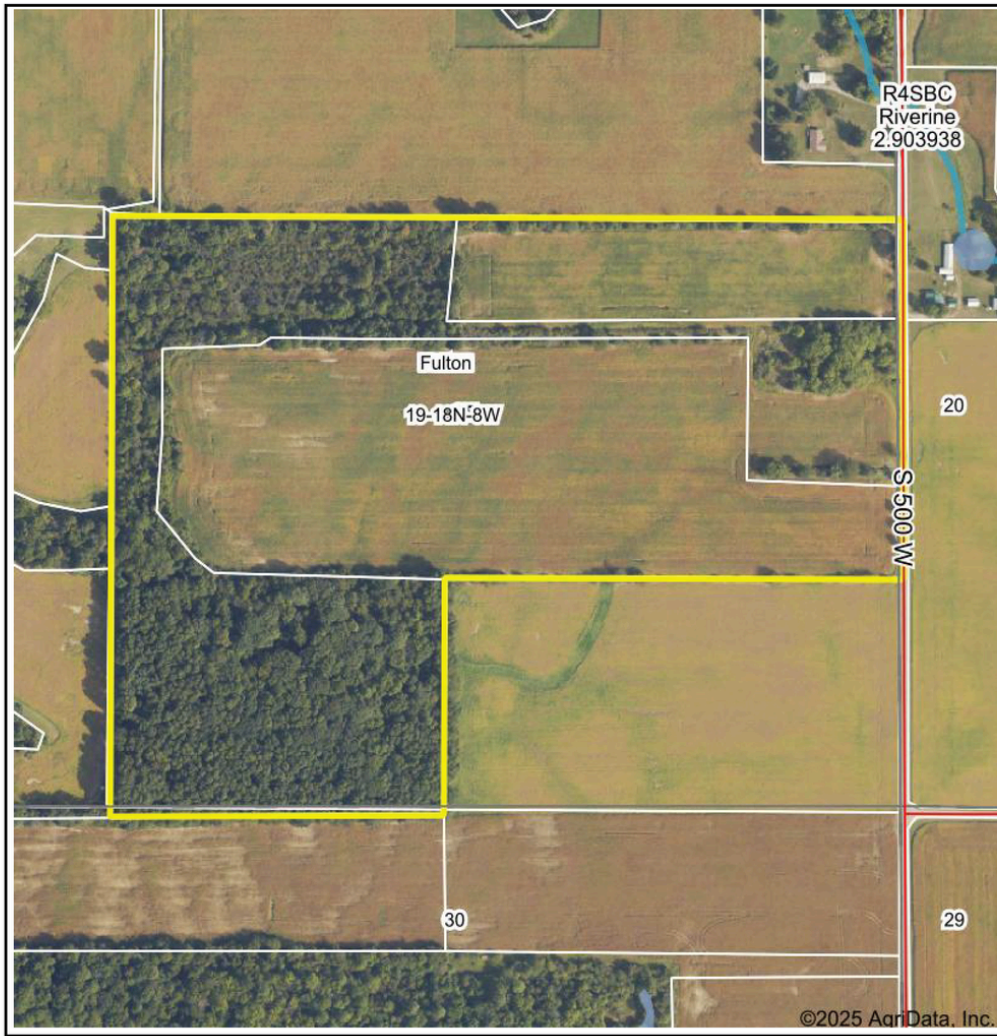
9/5/2025

**19-18N-8W**  
Fountain County  
Indiana

Boundary Center: 39° 59' 3.76, -87° 21' 37.58

# WETLANDS MAP

67 +/- Acres | Fountain County, Indiana  
Listing #JK252365AU



State: **Indiana**  
Location: **19-18N-8W**  
County: **Fountain**  
Township: **Fulton**  
Date: **9/5/2025**

**GESWEIN**  
FARM & LAND

Maps Provided By:  
  
CUSTOMIZED ONLINE MAPPING  
© AgriData, Inc. 2023 www.AgriDataInc.com



Classification Code	Type	Acres
		Total Acres 0.00

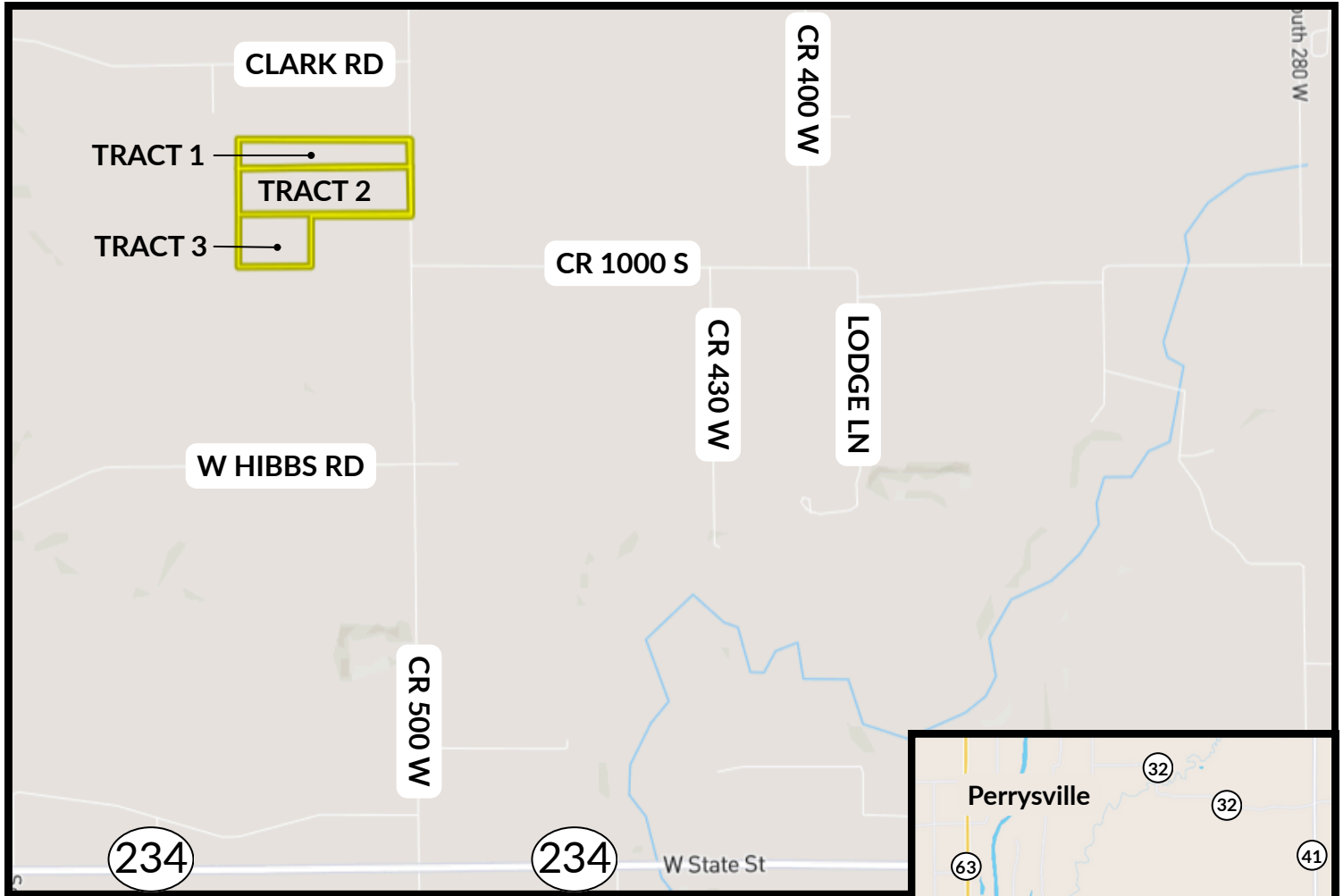
Data Source: National Wetlands Inventory website. U.S. DoI, Fish and Wildlife Service, Washington, D.C. <http://www.fws.gov/wetlands/>

Field borders provided by Farm Service Agency as of 5/21/2008.



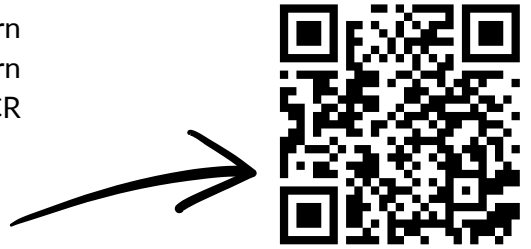
# DIRECTIONS

67 +/- Acres | Fountain County, Indiana  
Listing #JK252365AU



From Crawfordsville, Indiana: Follow IN-32 west. Turn right (north) on IN-341 and then left onto IN-32 to continue west. Cross US-41 and continue to head west. Turn left (south) onto CR 70 W/S Kingman Road. Turn right (west) onto CR 800 S/ Allen Rd. In 3.3 miles, turn left (south) onto Cates Rd/CR 400 W. In half a mile, turn right (west) onto CR 840 S. In one mile, turn left (south) onto CR 500 W. Farm will be on the right (west) side in 1.4 miles.

From Danville, Illinois: Follow I-74 East. Take exit 8 toward Covington. Turn right (south) onto Stringtown Road. Follow for approximately 8.5 miles. Turn left (east) onto CR 840 S. Turn right (south) at the first cross street onto CR 500 W. Farm will be on the right (west) side in 1.4 miles.



**SCAN THE QR CODE FOR DIRECTIONS  
FROM YOUR LOCATION**

Photos, aerial images, and map drawings are for illustration purposes only and not surveyed boundary lines unless specified.

**AUCTIONEER:**  
JOHNNY KLEMME  
(765) 427-1619  
Johnny@gfarmland.com  
IN AU# 12000053  
**SELLER:** The Moore Family, et al.



# PARCEL INFORMATION

67 +/- Acres | Fountain County, Indiana  
Listing #JK252365AU

STATEFORM 5369 (R25/11-24)  
APPROVED BY STATE BOARD OF ACCOUNTS, 2024  
COUNTY: **23-Fountain**

TREASURER FORM TS-1A  
PRESCRIBED BY THE DEPARTMENT OF LOCAL GOVERNMENT FINANCE IC 6-1.1-22-8.1  
**SPRING INSTALLMENT REMITTANCE COUPON**

PARCEL NUMBER 23-15-19-406-001.000-004	DUPLICATE NUMBER 1016053	TAX YEAR 2024 Payable 2025	Late Payment Penalty: 5% penalty after May 12, 2025, if there is no delinquent amount: 10% penalty for previous delinquency or if payment is made after June 11, 2025
TAXING UNIT NAME Fulton Township	LEGAL DESCRIPTION 016-00268-00 PT SPT SE 19-18-8 65A		

PROPERTY ADDRESS  
3904 S 500 W, Kingman IN 47952



<b>SPRING AMOUNT DUE</b> by May 12, 2025	<b>\$0.00</b>
---	---------------

Office Phone: (765)793-6226  
Pay Online at: [www.lowtaxinfo.com](http://www.lowtaxinfo.com)  
Pay By Phone: 877-690-3729 (JURISDICTION CODE 2437)  
Remit Payment and Make Check Payable to:  
Fountain County Treasurer  
301 4th St  
Covington IN 47932

Reprinted: 10/23/2025 04:06 PM LowTaxInfo.com

COUNTY: **23-Fountain**

**FALL INSTALLMENT REMITTANCE COUPON**

PARCEL NUMBER 23-15-19-406-001.000-004	DUPLICATE NUMBER 1016053	TAX YEAR 2024 Payable 2025	Late Payment Penalty: 5% penalty after November 10, 2025, if there is no delinquent amount: 10% penalty for previous delinquency or if payment is made after December 10, 2025
TAXING UNIT NAME Fulton Township	LEGAL DESCRIPTION 016-00268-00 PT SPT SE 19-18-8 65A		

PROPERTY ADDRESS  
3904 S 500 W, Kingman IN 47952



<b>FALL AMOUNT DUE</b> by November 10, 2025	<b>\$0.00</b>
--	---------------

Office Phone: (765)793-6226  
Pay Online at: [www.lowtaxinfo.com](http://www.lowtaxinfo.com)  
Pay By Phone: 877-690-3729 (JURISDICTION CODE 2437)  
Remit Payment and Make Check Payable to:  
Fountain County Treasurer  
301 4th St  
Covington IN 47932

Reprinted: 10/23/2025 04:06 PM LowTaxInfo.com

COUNTY: **23-Fountain**

**TAXPAYER'S COPY - KEEP FOR YOUR RECORDS**

PARCEL NUMBER 23-15-19-406-001.000-004	DUPLICATE NUMBER 1016053	TAX YEAR 2024 Payable 2025	DUE DATES <b>SPRING - May 12, 2025</b> <b>FALL - November 10, 2025</b>
TAXING UNIT NAME Fulton Township	LEGAL DESCRIPTION 016-00268-00 PT SPT SE 19-18-8 65A		

DATE OF STATEMENT: **10/23/2025**

**TOTAL DUE FOR 2024 PAY 2025: \$0.00**

PROPERTY ADDRESS 3904 S 500 W, Kingman IN 47952		
PROPERTY TYPE Real	TOWNSHIP: Fulton TWP	
ACRES 65.0000	Total AV PTRC Rate 1.1668	LIT 1% Rate 4.0893

ITEMIZED CHARGES	SPRING TOTAL	FALL TOTAL
Tax	\$692.90	\$692.90
Delinquent Tax	\$588.72	\$0.00
Delinquent Penalty	\$58.87	\$0.00
Other Assessment (OA)	\$0.00	\$0.00
Delinquent OA Tax	\$0.00	\$0.00
Delinquent OA Penalty	\$0.00	\$0.00
Fees	\$0.00	\$0.00
Adjustments	\$0.00	\$0.00
<b>Amount Due</b>	<b>\$1,340.49</b>	<b>\$692.90</b>
Payment Received	\$1,340.49	\$692.90
<b>Balance Due</b>	<b>\$0.00</b>	<b>\$0.00</b>

Reprinted: 10/23/2025 04:06 PM LowTaxInfo.com

\*A new survey was completed January 2026. See terms & conditions for details.



**AUCTIONEER:**

JOHNNY KLEMMER  
(765) 427-1619

Johnny@gfarmland.com  
IN AU# 12000053

SELLER: The Moore Family, et al.